

AFM HYDRAULICS



"We Are Importer For Tokimec, Rexroth, Parker, Yuken, Eaton, Vickers, Denison, Dowty, Nachi."



AFM HYDRAULICS

All Complete Hydraulics Solution

Introduction

Known for manufacturing and importing of high-quality Hydraulic Equipment and Control System. The offered product range Comprises of We are one of the leading manufacturer & exporter Of Hydraulic Power Pack, Control Valve, Hydraulic Lift Valve Block, Hydraulic Pump, Hydraulic Motor and much more. These hydraulic Equipment and control systems are precisely engineered from a High-quality raw material, which is obtained from well-known International vendors. Due to their optimum performance, Volumetric accuracy, easy installation, impeccable finish and low Maintenance, these products are highly demanded in the market. We deal in TOKIMEC, REXROTH, PARKER, YUKEN, POLYHYDRON, EATON VICKERS, DENISION, VELJAN, DOWTY, NACHI, DANFOSS ETC.

Due to our sophisticated infrastructure facility, we have been able To manufacture and import supreme quality hydraulic equipment And control systems. To ensure steam-line loading and unloading Operation in our warehouse facility, we have appointed highly Skilled professionals. We have appointed different experts that Are available 24x7 to solve queries arising from the customer's End.

Why Us

We are a reputed organization engaged in the provision of premium quality products. Our products are checked and approved on their quality by an adroit quality auditing team. Our durable and efficient products are also highly demanded in the overseas market because of their exceptional quality.

Reasons that have helped us become a preferable firm for our clients are :

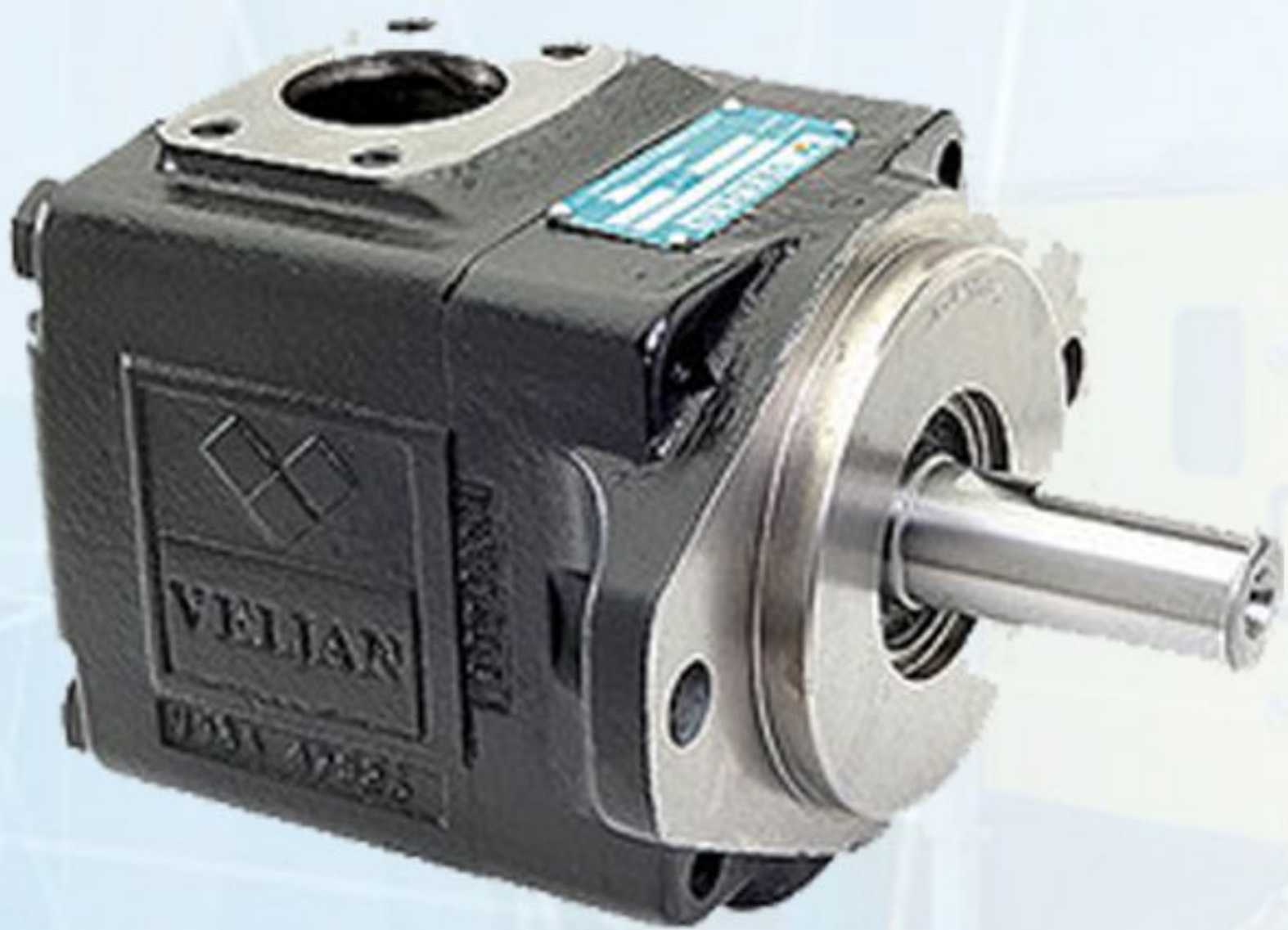
- State-of-the-art infrastructure and spacious warehouse
- Vast product line
- Quality assured products
- Experienced quality auditors
- Timely product delivery with affordable pricing policy
- Transparent business practices



Hydraulic Pump

WE DEALS IN TOKIMEC, EATON, VICKERS, REXROTH, YUKEN, POLYHYDRON, NACHI, DENISON ETC.

Hydraulic pumps deliver the functionality and durability required For success in the most demanding industrial and mobile Applications. They are supported by an Experienced global engineering and Manufacturing organization focused On meeting customer needs and delivering High-value products that provide customers With a competitive advantage.



Cartridge Kit

We are pioneers in offering a superior quality of Cartridge Kit and Shafts to our deemed patrons in Brand TOKIMEC. The product is Widely appreciated for its incomparable attributes like long Service life and low maintenance. The product is procured from The most renowned vendors of the industry. In order to meet the Divergent demands of the clients, we offer these products in Diverse sizes within the stipulated time frame. We are the stokist Of cartridge kit in 8 GPM, 11 GPM, 14 GPM, 21 GPM, 25 GPM, 30 GPM, 35 GPM, 38 GPM, 42 GPM & 50 GPM.

We can offer these Tokimec Cart Kits in the following sizes

- SQP 1
- SQP 2
- SQP3
- SQP4
- SQP 21
- SQP 31
- SQP 32
- SQP 41
- SQP 42
- SQP 43
- SQP 211
- SQP 311
- SQP 321
- SQP 421
- SQP 431
- SQP 432



Hydraulics Valve

With the support of our team of procuring agent, we are offering quality assured Hydraulics Valve. These Valves are a mechanical source of power that converts Mechanical power into hydraulic energy. Our offered generates flow with enough Power to overcome pressure induced by the load at the Valve outlet

We are dealing with Danfoss, Eaton, Nachi, Parker, Rexroth, Polyhydron, Tokimec, & Yuken Valves.

Features :

Optimum finish

Precise dimensions

High strength



DIRECTIONAL CONTROL VALVES Directional control valves can be used For Controlling direction of oil flow so as to operate start up, stop and moving Direction Of actuators in a hydraulic circuit. Their operating modes are solenoid Controlled, Solenoid operated and pilot controlled, pilot controlled, manual Controlled, cam - Actuated and so on.

PRESSURE CONTROL VALVES Pressure control valves are used for Controlling The pressure in a hydraulic system and protect its hydraulic pump And actuators From over-load. Accordingly to their functions, they can be Divided into different Types such as relief valve, pressure reducing valves, Sequence valve and unloading Relief valve.

MODULAR VALVES Yuken series modular valves are one kind of valves without Pipe connecting, which can meet the requirement of modern hydraulic system in Diversity and reasonable design. They have mounting faces which meet with International standards (ISO 46601) and have proper body thickness. According To requirements for control of a hydraulic system, single modules with different Types of modular valve with mounting screws.

LOGIC VALVES Logic valves comprise cartridge elements and covers with pilot Passages. They are suitable in the hydraulic system with high pressure, high flow Rate and low pressure drop. Application of the valves can implement quick Shifting and shockless movements of hydraulic system.

Hydraulics Valve

PROPORTIONAL ELECTRO - HYDRAULIC VALVES These valves are one kind of controllers which control pressure or flow rate continuously vary in proportion with electric input signal. They are typical mechanical, electrical and hydraulic integral products.

FLOW CONTROL VALVES Flow control valves can be used for controlling Revolving or reciprocating speed of actuators in a hydraulic circuit. These Valves are pressure and temperature compensating type and can Maintain a constant flow rate independent of change in system pressure (load) And temperature (viscosity of the fluid)



Hydraulic Power Pack

We are manufacturer and supplier of high quality Hydraulic Power Pack. Our Hydraulic Power Pack can be widely used in various organisation. These Hydraulic Power Pack can be customise in nature.

We are manufacturer and suppliers of Hydraulic Power Pack to various cities like Delhi, Noida, Ghaziabad, Faridabad, Gurgaon, Sonipat, Ambala, Karnal, Bhiwadi, Neemrana, Bulandshahr, Kanpur, Lucknow, Varanasi, Allahabad, Dehradun, Haridwar, Chandigarh, Shimla, Panchkula, Ludhiana, Gwalior, Jhansi, Agra, Jaipur, Ahmedabad & many more cities.

Hydraulic DC Power Pack

Product Details:

Brand AFM

Design Standard

Power Rating 0.5 kW to 3 kW



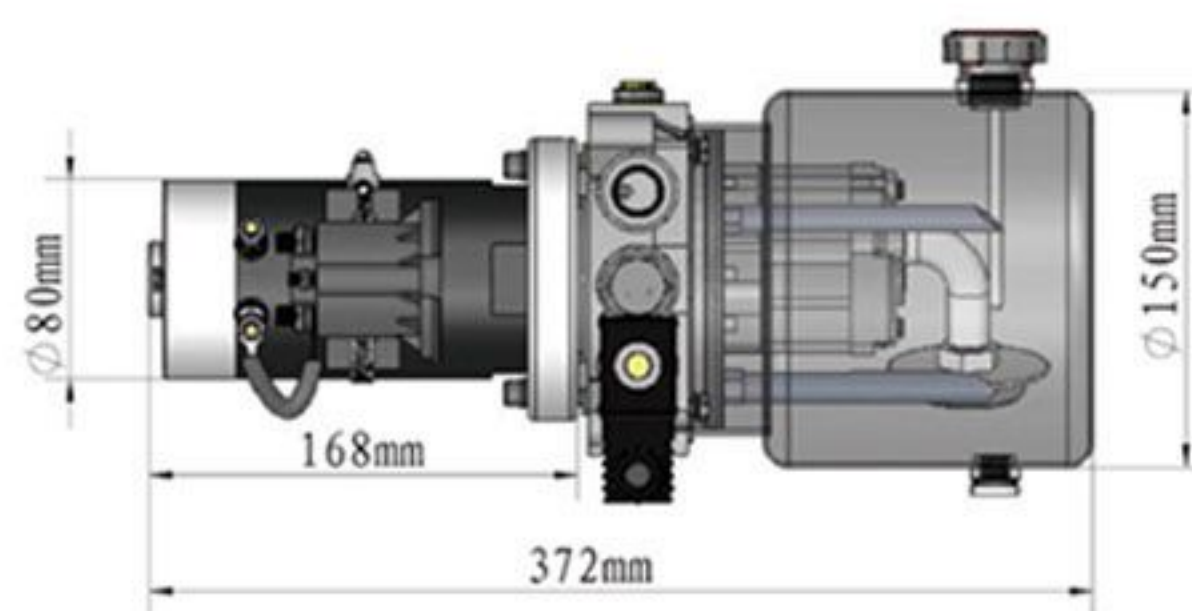
These are developed using high-end technology comparable to international Standards with a wide spectrum of application usages such as Cement Trucks, Mobile Hoists, Cranes, Wheelchair & Personal Lifts, Electric Forklifts, Portable Presses and Hydraulic Systems of various types.

Specifications:

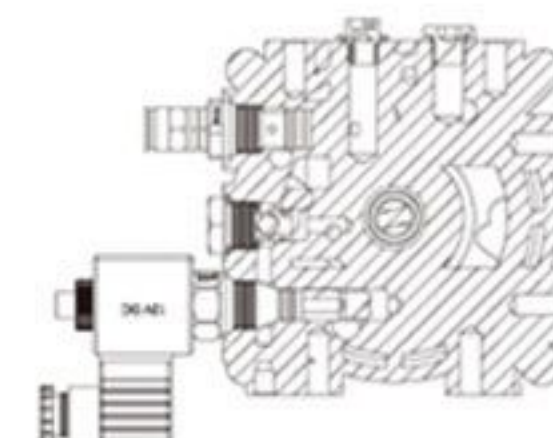
- Voltage rating: 12 & 24 VDC
- Pump option: 0.7 cc/rev, 1.0 cc/rev, 1.5 cc/rev, 1.9 cc/rev, 2.3 cc/rev, 3.0 cc/rev, 4.0 cc/rev
- Weight: A typical D.C. power pack with 2.4-liter tank weighs approx. 18.2 kg
- Hydraulic oil: Mineral oil with a viscosity range of 6 to 450 cSt at stabilized working temperature
- Working pressure: Typical working pressure is normally around 180 bar although it can be customised

Applications:

- Pallet Lifters/Trucks
- Hydraulic Hoppers
- Car Carries Trucks
- Compact Hydraulic Machines
- Battery Operated Trolleys
- Platforms
- Lifts
- Broadcasting Vans



UNIT SPECIFICATION		HYDRAULIC CIRCUIT
CENTER MANIFOLD	CME	
MOTOR	12V 800W	
PUMP	1.0CC/Rev.	
RELIEF	18Mpa	
OIL PORTS	G1/4"	
TANK	2.5L	
MOUNTING	HORIZONTAL	
RPCV	3L/min	



CENTER MANIFOLD: CME

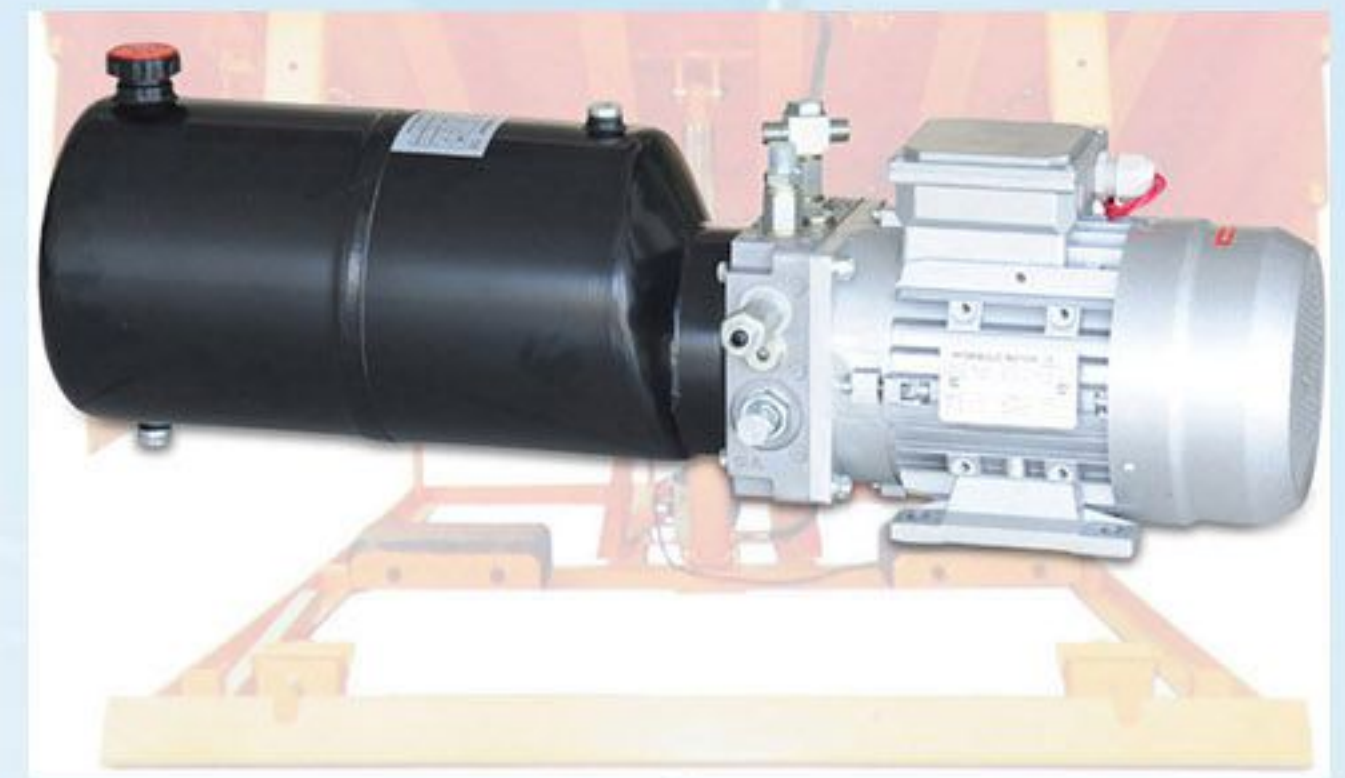
Hydraulic AC Power Pack

Product Details:

Brand AFM

Design Standard

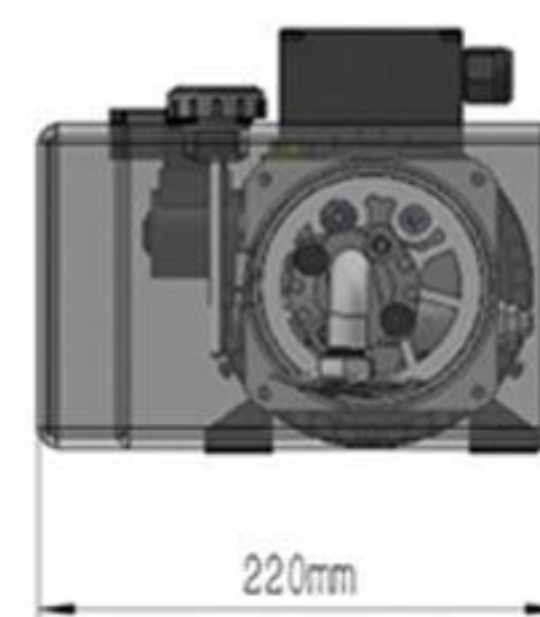
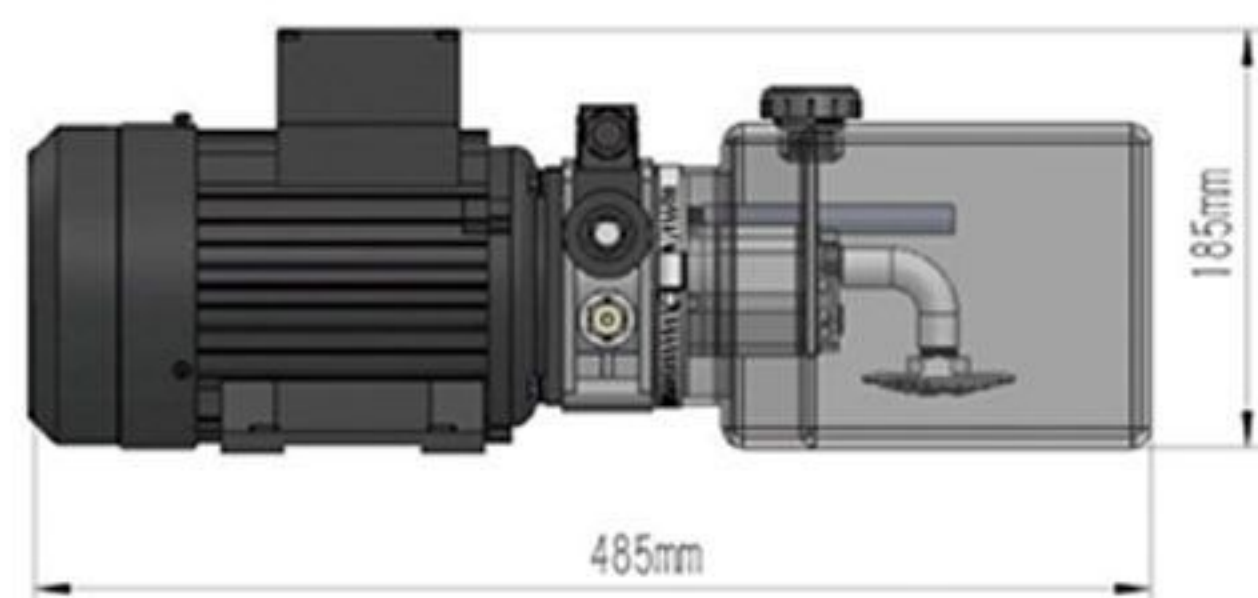
Voltage Rating Single Phase, Three Phase



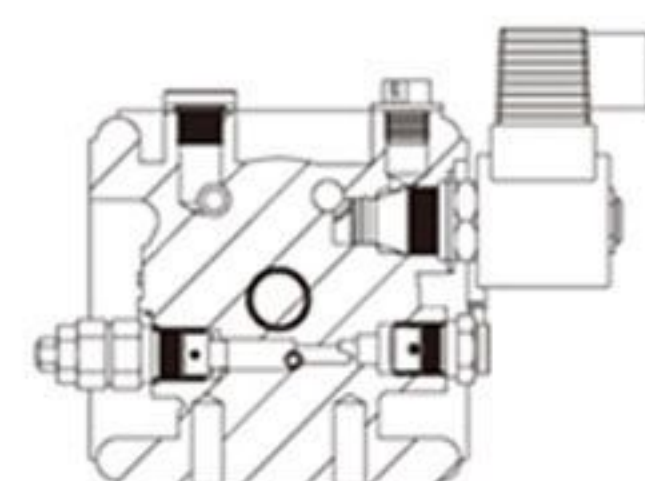
Our versatile, user-friendly AC Hydraulic Power Packs find applications in a host of equipment such as Parking Systems. Security Gates. Car Hoists, Compactors, Aerial Platforms, Dock Levelers. Factory Automation & Scissors Lifts ensuring optimal efficiency. cost savings And multiple control options and configurations.

Specifications:

- Power rating: 0.25 HP to 3 HP
- RPM: 1450 & 2850 RPM.
- Pump option: 0.5 cc/rev to 7.3 cc/rev
- Standard Tank sizes: 0.5 Ltr to 10 Ltr
- Hydraulic circuit valve can be interchanged with the standard manifold
- Weight: A typical A.C. power pack with 2.4-liter tank weighs approx. 18.2 kg when filled with oil. For larger tanks add 1 kg for each additional liter of capacity
- Hydraulic oil: Mineral oil with a viscosity range of 6 to 450 cSt at stabilized Working temperature
- Working pressure: Typical working pressure is normally around 180 bar Although pressure up to 250 bar is attainable (Special pressure settings are Available on request)



UNIT SPECIFICATION		HYDRAULIC CIRCUIT
CENTER MANIFOLD	CMA	
MOTOR	380V 0.75KW 2850RPM 3PH 50HZ	
PUMP	1.0CC/Rev.	
RELIEF	18Mpa	
OIL PORTS	G1/4"	
TANK	3.5L	
MOUNTING	HORIZONTAL	
RPCV	5L/min	



CENTER MANIFOLD: CMA

Hydraulic Lift Block

Product Name Hydraulic Lift Block

Part Number EF-02 / ET-02 /KVS-01/KVS-02

Solenoid Valve Normally Closed/Open

Solenoid Voltage DC12V /DC24V/AC110V/220V/

Oil port thread BSPP1/4" or BSPP3/8" and more

Manifold Material Aluminum 6061-T6

Working Pressure 40bar up to 250bar, setting @180bar

Temperature -20 -120

Flow L/M up to 25L/M

Mounting Flange / M6/M8



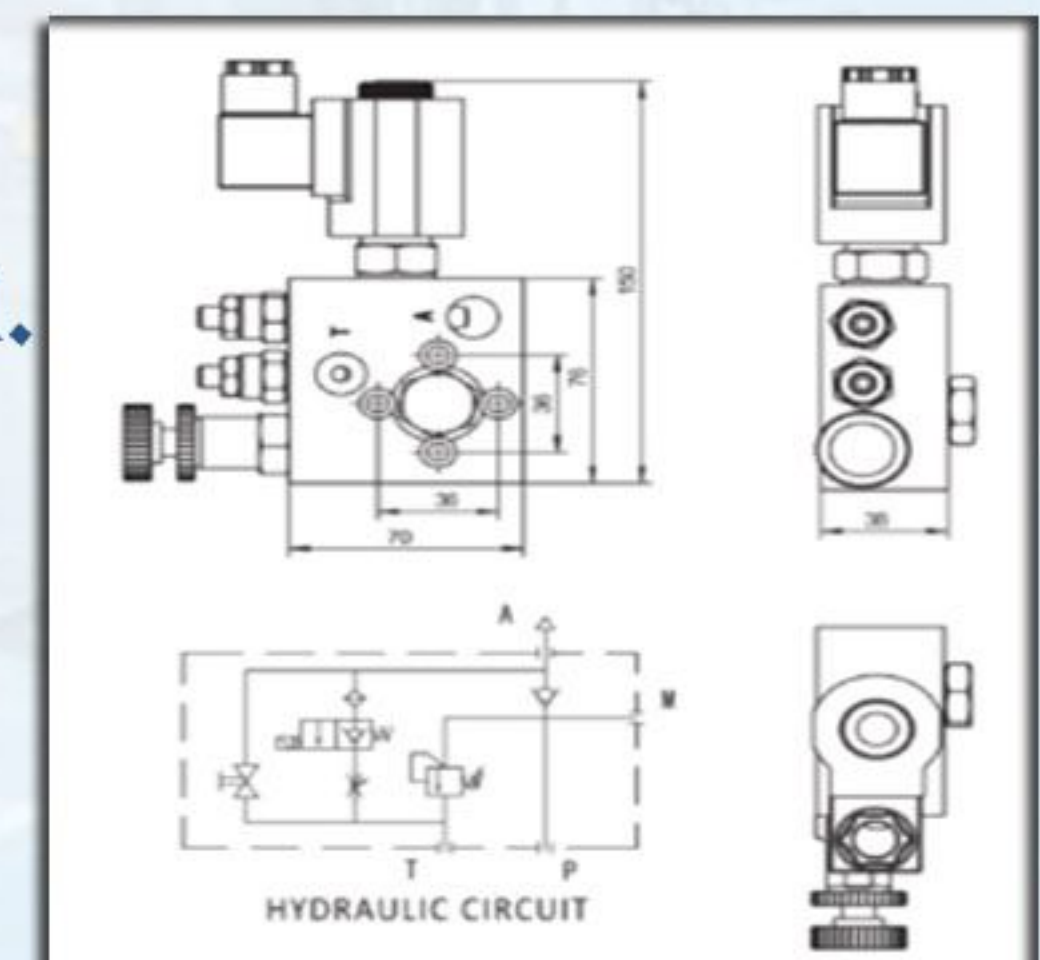
Hydraulic Lift Valve

Hydraulic lift valve is a compact hydraulic solution to Control single acting Hydraulic cylinders.

Hydraulic lift Valve Blocks system completed with some Hydraulic Cartridge valves and hydraulic manifold block.

The Whole hydraulic lift system can be lift up/down stably And the rate of the decline will not be Influenced by the load.

Hydraulic lift valves Part numbers are :EF-02 / ET-02 / KVS-01 / KVS-02.



Lift Hydraulic Valve Code: KVS-01 / EF-02

They offer a complete solution for lifting :

- Control single acting Hydraulic System
- Hold Pressure for single acting cylinder
- Controlling lowering speed,
- Hydraulic system acting
- People safety.
- Emergency Operating release hyd cylinder

Hydraulics Orbital Motor

Our competency lies in offering our clients an excellent quality range of Orbital Motor. It is suitable for closed and open loop hydraulic circuits for work and Propel systems. The offered motor is ideal for agricultural, road building, Construction, forestry, public utility and lawn and garden equipment. Apart From this, our motor is offered in different specifications and can be customized, As per precise needs of our clients.

We are dealing with Danfoss, Eaton & Nachi.

Features :

Easy to use

Hassle-free performance

Low maintenance



OMP SERIES

TYPE	OMP-50	OMP-80	OMP-100	OMP-125	OMP-160	OMP-200	OMP-250	OMP-315	OMP-400
Displacement	52.9	79.3	98.2	120.9	158.7	196.4	241.8	317.3	392.9
Pressure (Bar) Cont.	140	140	140	140	140	140	110	90	70
Pressure (Bar) Int.	175	175	175	175	175	175	140	110	90
Max. Torque (N.m) Cont.	89	150	191	235	307	365	378	378	378
Speed Range (r/min)	10-800	10-770	9-615	9-480	8-385	7-310	5-250	5-195	5-155
Max. Output.Power (Cont.) (Kw)	10	7	10	10	10	10	8	6	5

OMR SERIES

TYPE	OMR-50	OMR-80	OMR-100	OMR-125	OMR-160	OMR-200	OMR-250	OMR-315	OMR-400
Displacement	51.7	80.5	100.5	126.3	160.8	200.9	252.6	321.5	401.9
Pressure (Bar) Cont.	140	140	140	140	140	140	110	90	70
Pressure (Bar) Int.	175	175	175	175	175	175	140	110	90
Max. Torque (N.m) Cont.	93	152	194	237	310	369	380	380	380
Speed Range (r/min)	10-775	10-750	10-600	9-475	7-375	5-300	5-240	5-190	5-160
Max. Output.Power (Cont.) (Kw)	10	7	10	10	10	10	8	6	5

OMS SERIES

TYPE	OMS-80	OMS-100	OMS-125	OMS-160	OMS-200	OMS-250	OMS-315	OMS-400
Displacement	80.7	100.5	126.3	160.8	200.9	252.6	321.5	401.9
Pressure (Bar) Cont.	175	175	175	160	160	125	125	100
Pressure (Bar) Int.	200	200	200	200	200	160	160	140
Max. Torque (N.m) Cont.	194	242	303	358	438	440	551	560
Speed Range (r/min)	10-810	10-750	9-600	7-470	6-375	6-300	5-240	5-180
Max. Output.Power (Cont.) (Kw)	14	16	16	14	14	11	10	8

OMT SERIES

TYPE	OMT -160	OMT -200	OMT -250	OMT -320	OMT -400	OMT -500
Displacement	158.8	200.8	252.2	317.5	401.6	535.3
Pressure (Bar) Cont.	200	200	200	200	180	160
Pressure (Bar) Int.	240	240	240	240	210	180
Max. Torque (N.m) Cont.	450	561	710	902	1008	1121
Speed Range (r/min)	9-625	8-500	7-380	6-305	5-240	5-240
Max. Output.Power (Cont.) (Kw)	20.1	25.2	25.2	25.2	22	31

Mobile Control Valve

We are successfully ranked amongst the trustworthy entities offering a wide Range of Control Valves. These efficient valves are manufactured using quality Materials and advanced technology. Our professionals manufacture all kinds of Valves according to the trending demands and clients’ needs. In addition, the Offered valves are built and developed adhering to industry standards. Furthermore, quality control team opts for strict quality inspection to assure Flawless performance of the valves during operation. Besides, clients can get the Valves from us at industry leading cost.

- Features :**
- Customization available
 - Robust and approved design
 - Better fit



TECHNICAL DATA

TYPE	P40	P80
Number of working section	1-6	1-6
Rated Flow	40 LPM	80 LPM
Rated Pressure		
• In outlet P,A,B and N	250 bar	250 bar
• In outlet T	100 bar	100 bar
• Control Pressure Range	50-250 bar	50-250 bar
Degree of Filtration	25 µm	25 µm
Temperature Range	-20 to +80 °C	-20 to +80 °C



AFM
HYDRAULICS



AFM HYDRAULICS

Mob : +91-9454829846, 9415658943

Email : sales@afmhydraulics.com

Website : www.afmhydraulics.com

**B.O. : NH.24, Delhi Hapur Bypass Road, Mehrauli,
Ghaziabad-201002 (U.P.)**

**H.O. : Office No. - 3, Sharma Buliding Jallalpur, Khoripakar
Ballia - 277001(U.P.)**